

# BERRY COLLEGE

## Campus Improvement Plan • Site Standards

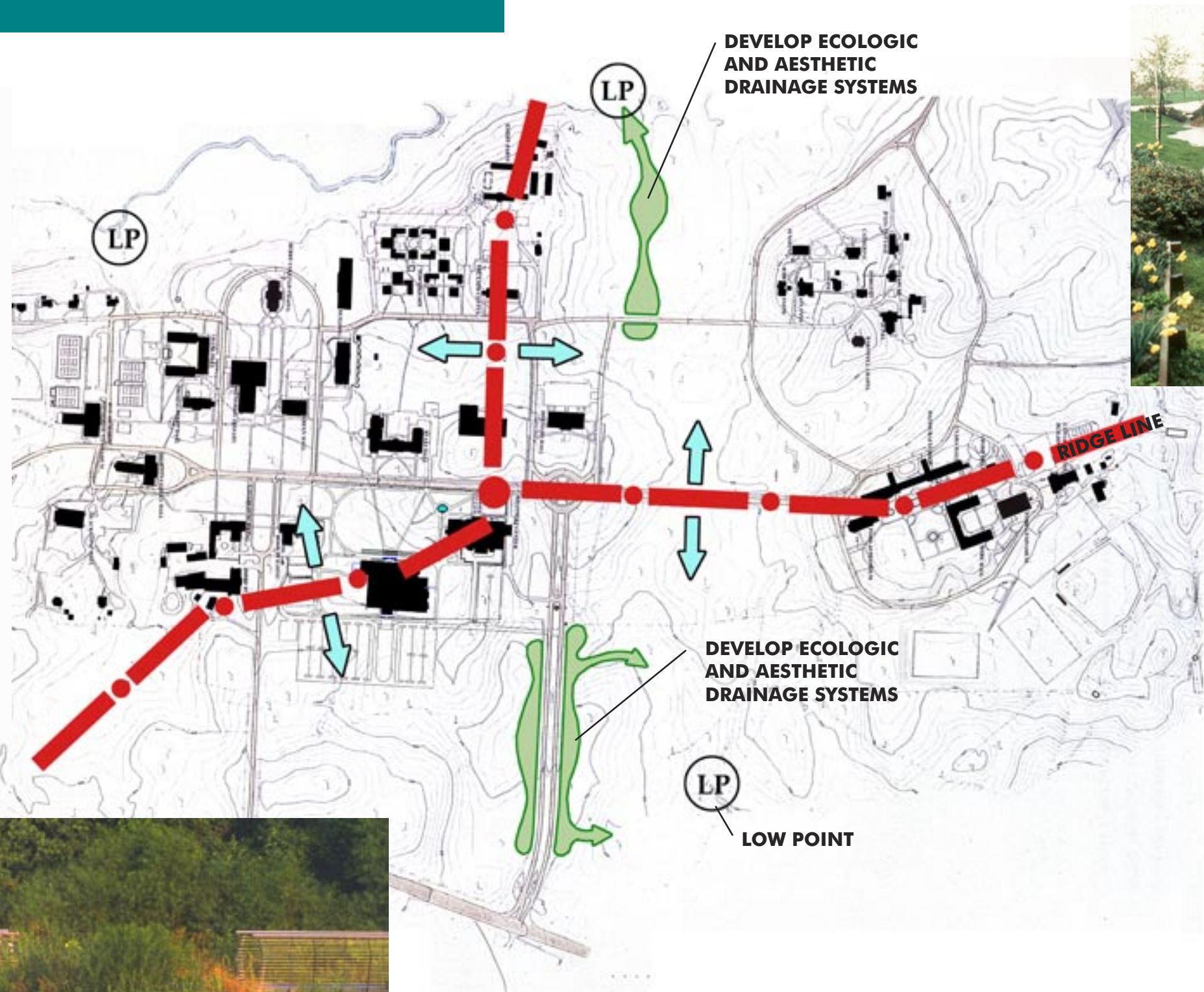
**VAN YAHRES ASSOCIATES**  
**CAMPUS PLANNING • SITE DESIGN**  
 800 E. HIGH ST. • P.O. BOX 824 • CHARLOTTESVILLE, VIRGINIA 22902  
 804-295-4734 • FAX 804-295-8644 • EMAIL vya@vanyahres.com  
 www.vanyahres.com  
 All rights reserved.

### EXISTING

- The existing main campus drainage system is at its limit.

### PROPOSED

- **New construction should strive to handle storm drainage on site**
- **Consider permeable pavement**
- **As a top priority, consider recharge/retention in an ecologically sustainable manner**  
 I.E. both surface runoff collection and dispersal handled on site
- **Consider underground storage/transport as a low priority**



STORM DRAINAGE

SHEET OF

JULY 2006

NTS

